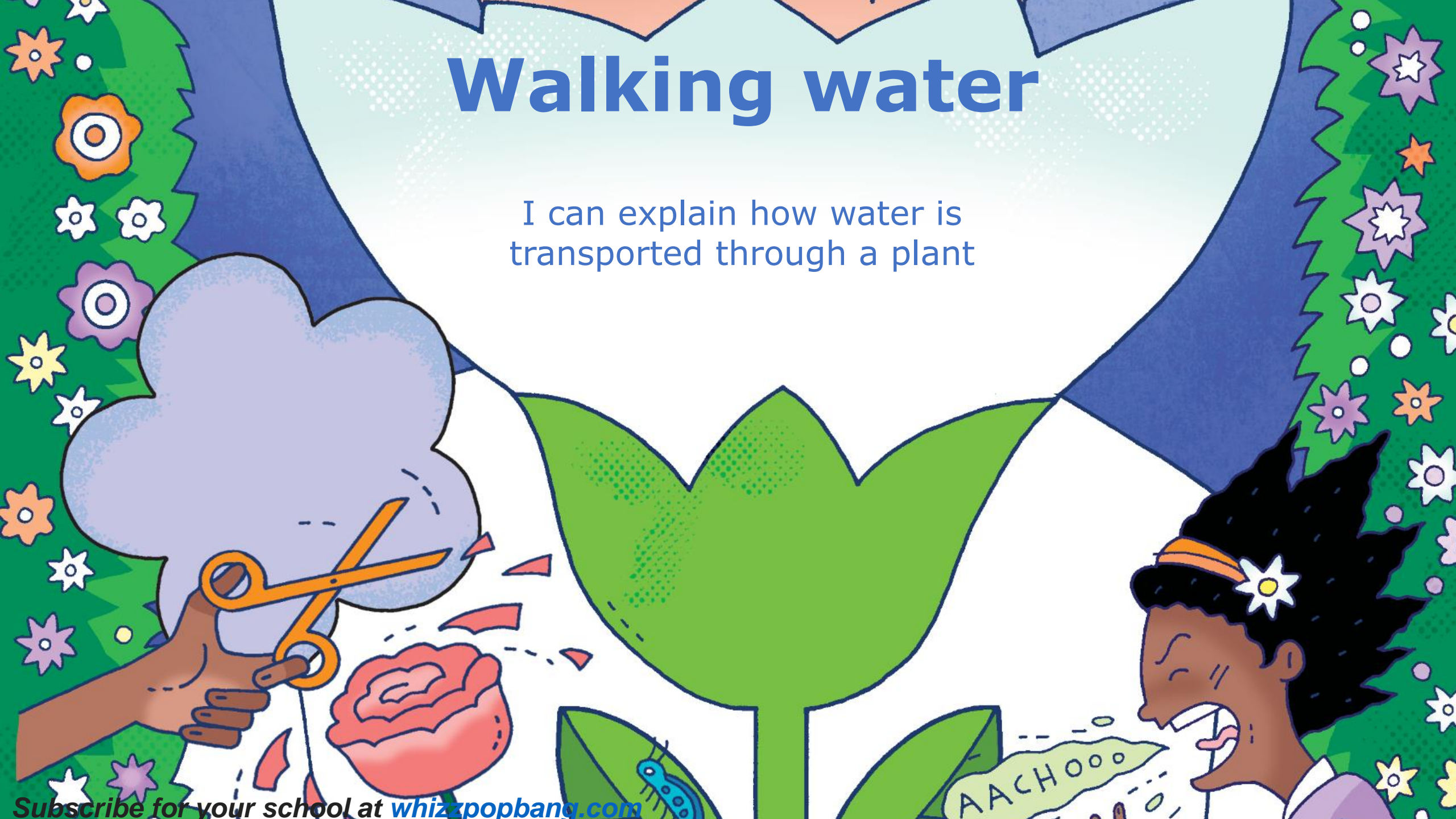


Walking water

I can explain how water is transported through a plant



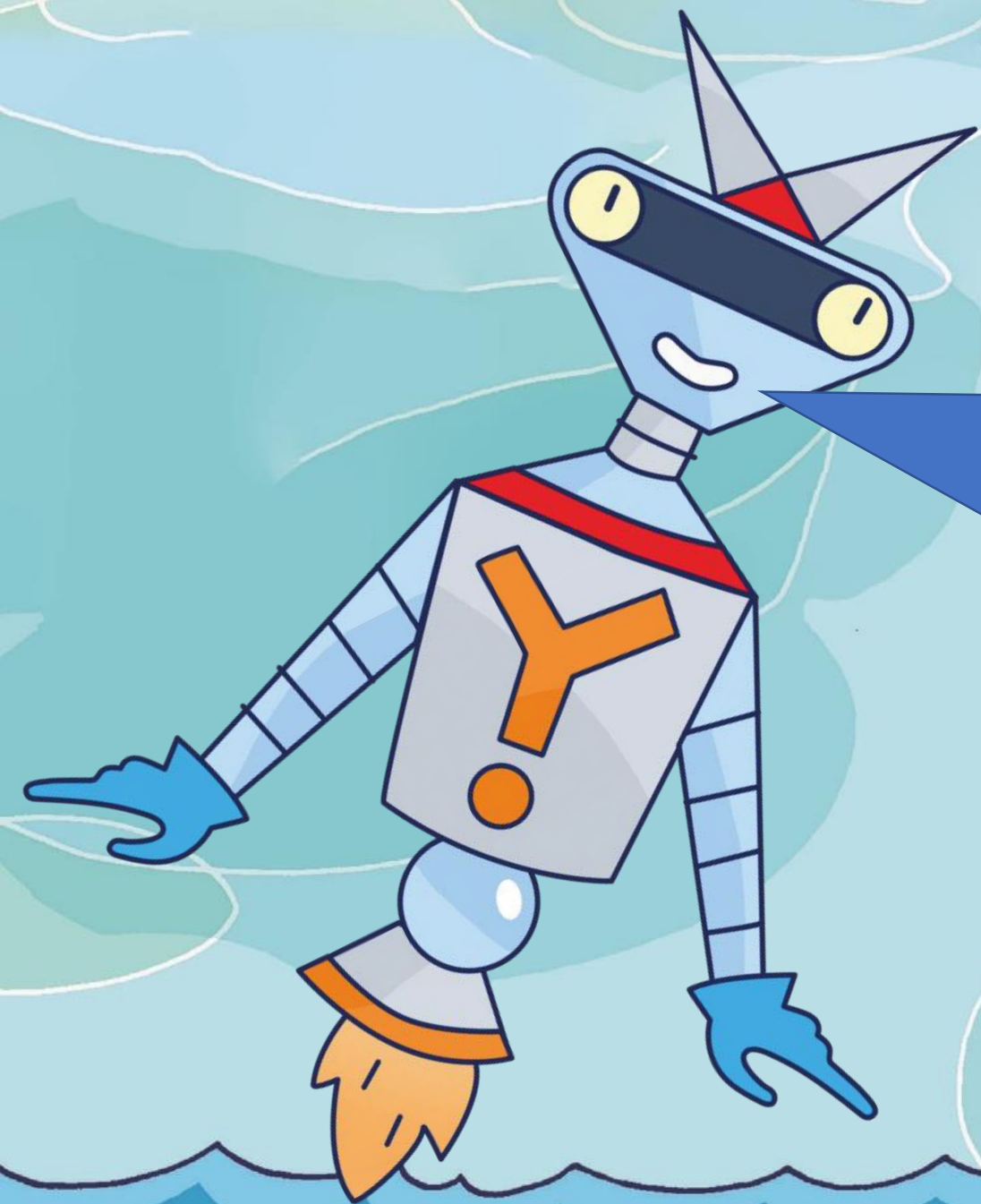
You will need:

- 3 glasses
- 2 sheets of kitchen roll
- Blue food colouring
- Yellow food colouring

What you do:

1. Half fill two glasses with water. Add some blue food colouring to one and some yellow food colouring to the other.
1. Place the two glasses of coloured water either side of the empty glass.
2. Fold a sheet of kitchen roll lengthways until it fits into the glass. Now place one end of the kitchen roll into the blue water and the other end into the empty glass. Do the same with the other piece of kitchen roll and the glass of yellow water.





You should find the water will start 'walking' up the kitchen roll and over into the middle glass. After a couple of hours, the middle glass should have a mix of the two colours of water in it. This is because the water travels through tiny gaps between the kitchen roll's fibres. This is called capillary action. Plants use capillary action to help them move water from the ground up through their stems.