A world map with a light blue background and black outlines for continents and latitude lines. The map is color-coded into climate zones: pink for the polar regions (Arctic and Antarctic), yellow for the temperate zones, and green for the tropical zones. The text 'The Rainforest Climate' is overlaid in the center in a large, bold, black font with a white outline. The word 'The' is on the top line, 'Rainforest' is on the second line, and 'Climate' is on the third line. The green zones, representing rainforest climates, are located in South America (Amazon basin), Central Africa (Congo basin), and Southeast Asia (Indochina and Indonesia).

The Rainforest Climate



Aim

- I can identify areas of the world containing rainforests.
- I can explain the key aspects of a rainforest climate.

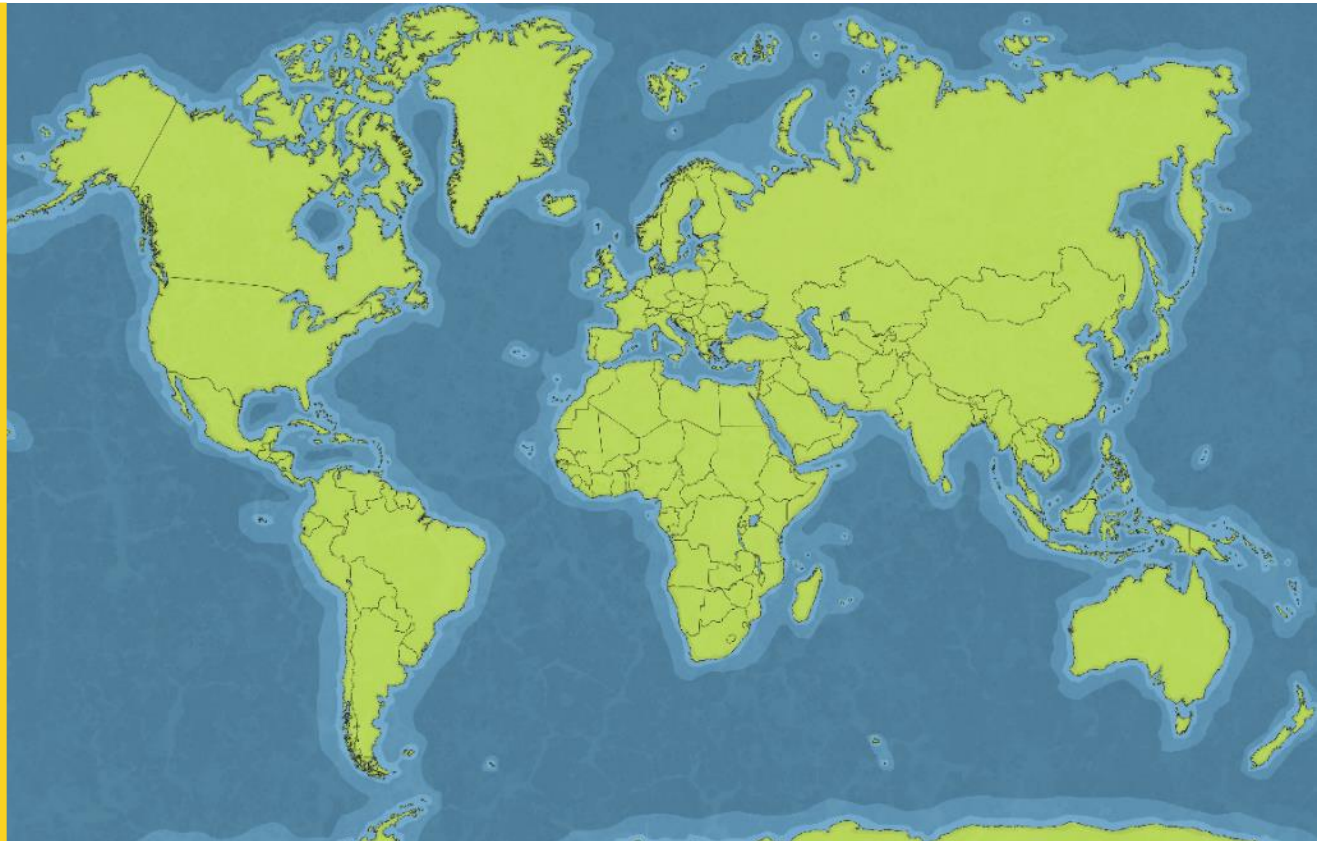
Success Criteria

- I can find the Equator on a map.
- I can tell you that rainforests are found near the Equator.
- I can find the tropics of Cancer and Capricorn on a map.
- I can tell you that rainforests are found between the tropics of Cancer and Capricorn.
- I can tell you the difference between weather and climate.
- I can describe what the weather is usually like in a tropical climate.

Can You Remember Where Rainforests Are Found?

Can you find each country?

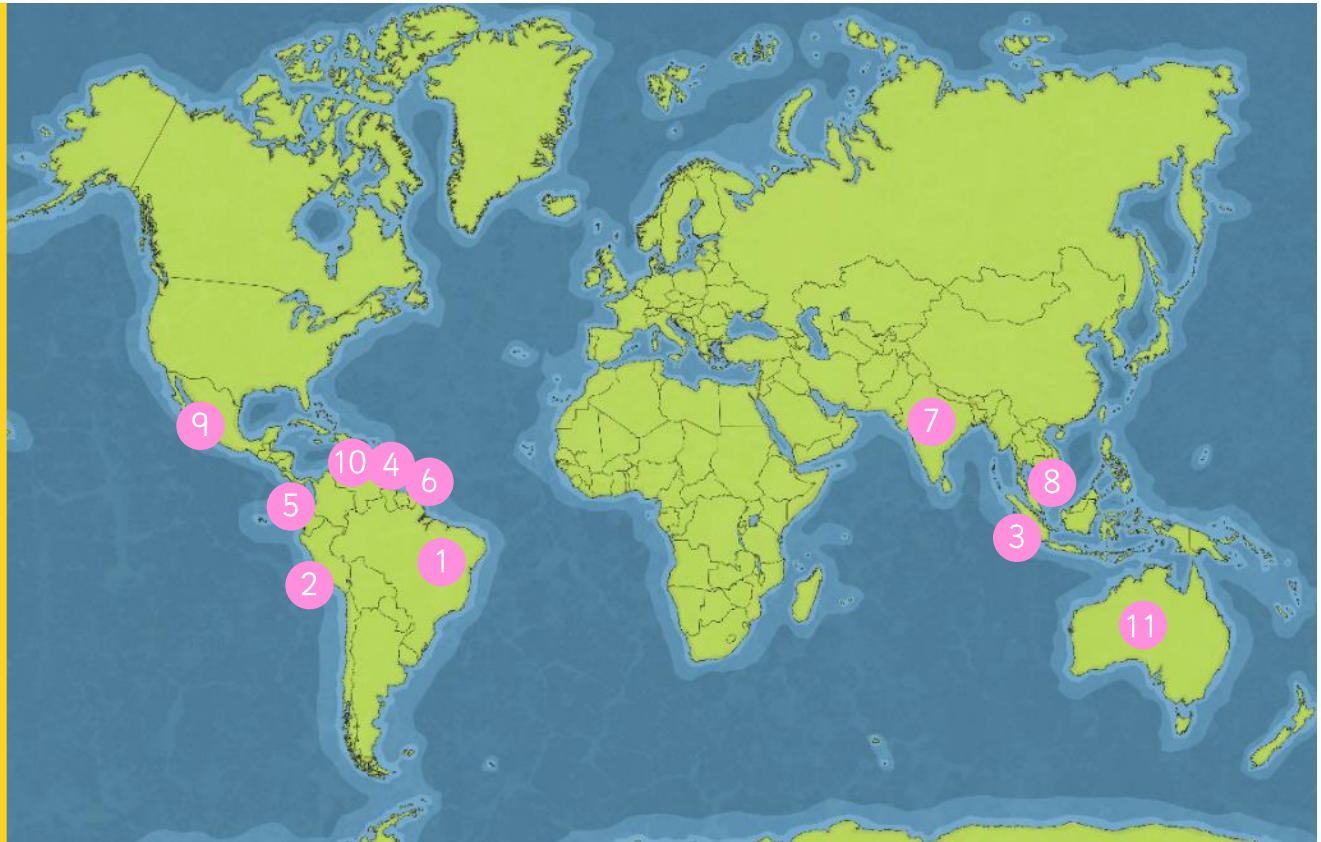
- 1 Brazil
- 2 Peru
- 3 Indonesia
- 4 Bolivia
- 5 Ecuador
- 6 Guyana
- 7 India
- 8 Malaysia
- 9 Mexico
- 10 Venezuela
- 11 Australia



Can You Remember Where Rainforests Are Found?

Can you find each country?

- 1 Brazil
- 2 Peru
- 3 Indonesia
- 4 Bolivia
- 5 Ecuador
- 6 Guyana
- 7 India
- 8 Malaysia
- 9 Mexico
- 10 Venezuela
- 11 Australia



What Do You Notice?

What do you notice about the location of most rainforests?

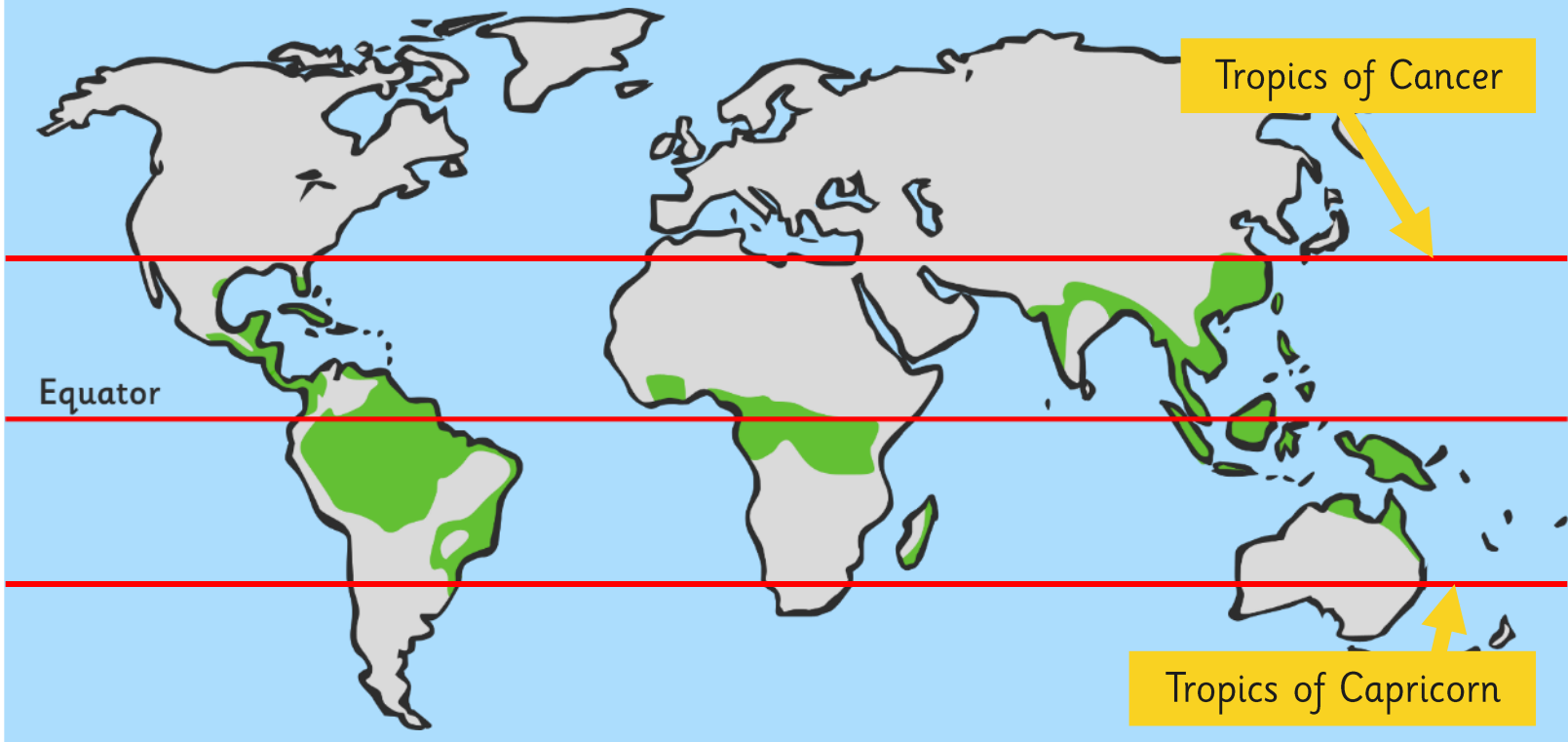


What's this line called?

Rainforests are found near to the equator.

What Do You Notice?

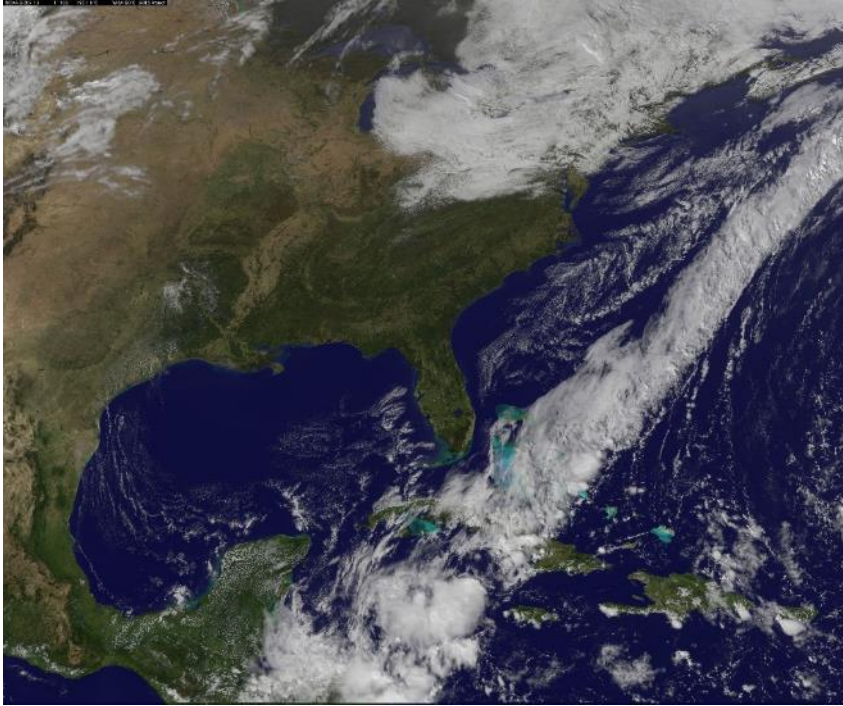
What do you notice about the location of most rainforests now? Can you describe their location even more precisely?



Rainforests are found between the Tropics of Cancer and Capricorn.

Climate and Weather

What is the difference between weather and climate?



Climate is the usual or average weather conditions over a long period of time.

Weather is the specific condition on a given day (which may or may not be typical for a climate).

The differences in climate throughout the world can be caused by a number of things: Latitude or distance from the equator, altitude or height, prevailing winds, distance from the sea and ocean currents.

What Is the Climate of a Rainforest?

There are no seasons – the climate is the same all year round.

Every month has an average rainfall of at least 6cm.

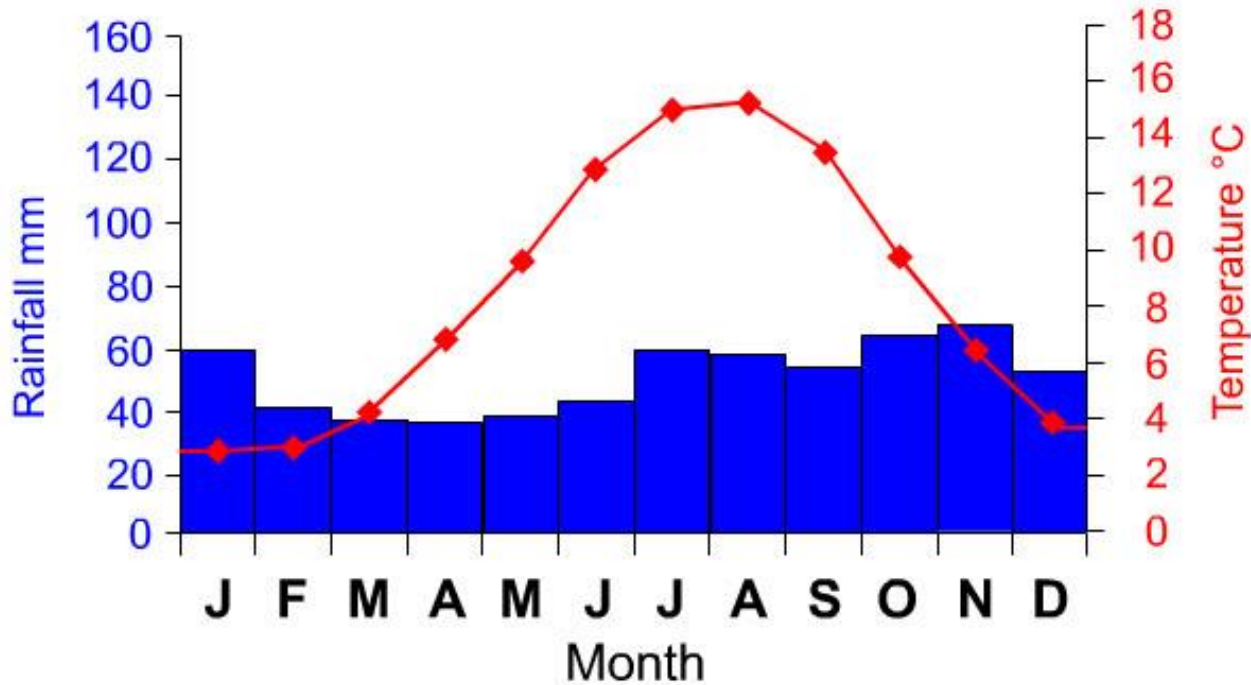
It usually rains every day.

Temperatures are hot all year round.

It is very humid.

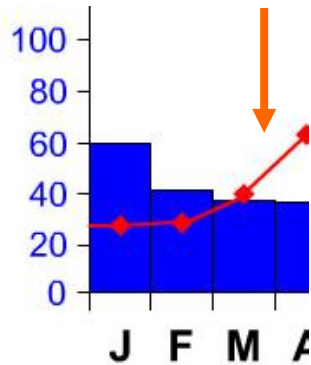


Climate graphs are a way of showing how **temperature** and **precipitation** vary throughout the year for a particular place.



How to construct a climate graph...

1. Draw and label the axes (remember you need two names for the y axis – ‘temperature’ and ‘rainfall’ - look at example on previous page).
2. Work out the right scale for each axis (look at your highest temperature and rainfall figures).
3. Draw the graph using bars for rainfall and a line for temperature. Remember to plot the temperature points in the middle of the months on the x axis.



Task

Draw a climate graph for the data below – use the squared paper provided (if possible)

	Jan	Feb	Mar	Apr	May	Jun	July	Aug	Sept	Oct	Nov	Dec
Temperature (° C)	27	27	27	27	28	28	28	29	28	28	27	27
Rainfall (mm)	240	230	250	220	170	100	100	80	100	150	190	250

Climate data for Manaus, Brazil, Central Amazon.