

Art



Staffordshire Hoard
Artefacts

Your Artefact



When designing your own piece you will need to think about it's purpose as well as the shape, pattern texture etc.

Read the descriptions of the artefacts and try to match them to the artefact images further on in the slides.

Artefact descriptions

☞ Dagger hilt

The hilt is the part of a dagger usually called a handle. It is made of gold, decorated with animals. The hole through the centre shows that the blade was single edged.

☞ Hilt fitting

This is part of the handle of a sword. It is made from gold and precious stones decorated with animals.

☞ Scabbard boss

This is a button-like gold fitting which may have been used to hold the sword in place in a leather strap while it was not being used.

☞ Stylised horse

This was part of a helmet with an end in the form of an animal.

☞ Gold sword fitting



The function of this object is not certain. It is still covered in mud from the field where it was found. It is made from gold and precious stones. It has been bent out of its original shape.

☞ Small gold buckle

It is plain apart from a band of filigree around the rivets.

☞ Sword pyramid fittings

These may have been attached to the leather straps that held the sword in its scabbard. If you look carefully, you can see two birds facing each other.

❧ Millefiori stud

A black and white glass gem within a gold and garnet setting.

❧ Helmet cheek piece



A triangular piece made from gold and decorated with lines of animals facing left and right.

❧ Folded cross

There were only four or five of these found in the Hoard. They are the only items which are clearly not weapons. It had been folded before being buried.

❧ Metal fish and birds

Possibly an emblem from a Saxon shield. You can see a swirling design.

Can you work out what the purpose of each artefact is? Match to the descriptions



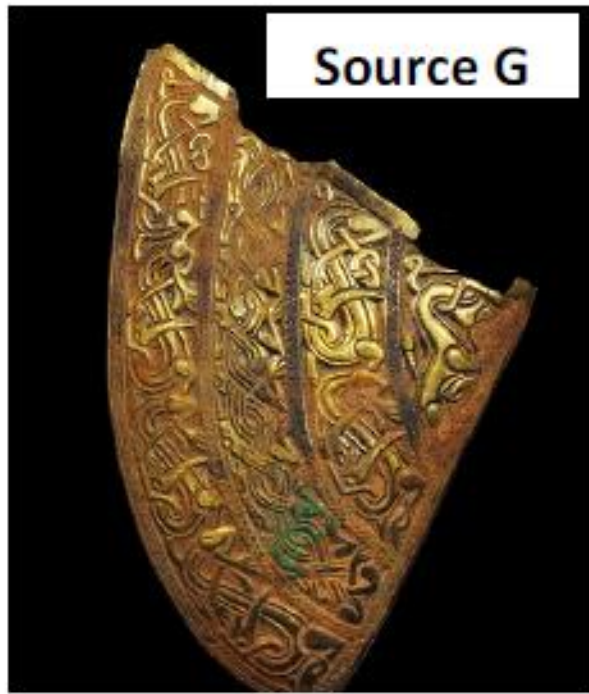
Source D



Source E



Source F



Source G



Source H



Source I



Source J



Source K

Answers

❧ Dagger hilt - Source J

❧ Hilt fitting - Source F

❧ Scabbard boss - Source A

❧ Stylised horse terminal - Source E

❧ Millefiori stud - Source H

❧ Gold sword fitting - Source B

❧ Small gold buckle - Source K

❧ Sword pyramid fittings - Source D

❧ Helmet check piece - Source G

❧ Folded cross - Source C

❧ Metal fish and birds - Source I

How to Sketch



☞ Watch this video on how to start sketching – it focuses on outlines, edging and shading

<https://www.youtube.com/watch?v=OezMavBqWXc>

This Week's Task



- Now think about the purpose of your piece – is it a weapon? Is it to protect? (e.g. a helmet) Is it a religious artefact?
- Start to sketch your ideas and save them for next week. It might be a good idea to try sketching pieces which have different purposes this week before you decide upon one.
- In your sketches this week focus upon the outline, edging and shading. We will move onto pattern and texture next week.
- We'd love to see your initial sketches and hear what their purpose is.