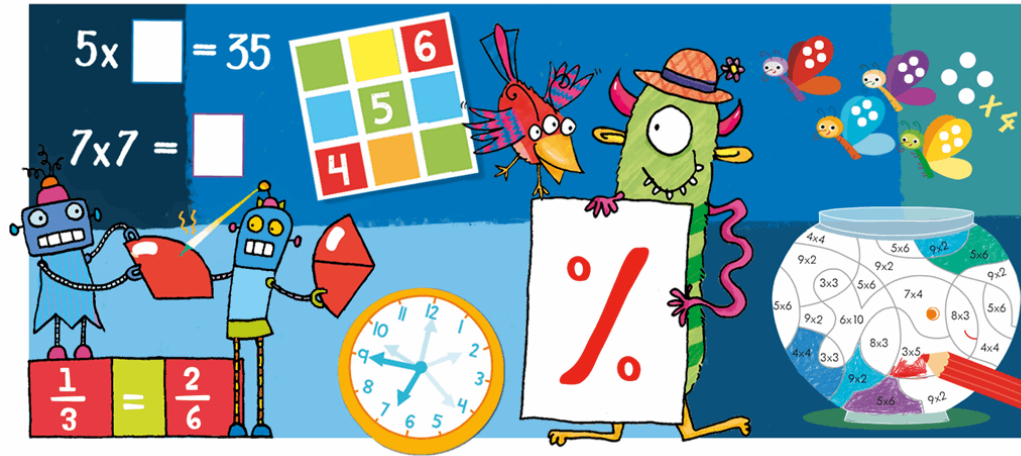


Weekly Maths Overview- Year 5

W/C Monday 4th May



My Maths

- ▶ You have been set 5 tasks on My Maths. These can be completed at any point over the week. Each task has a teach tool and practice questions for you to try if you are not sure what to do.
- ▶ Make sure you check if I have left you any feedback on tasks that you have already completed.
- ▶ This week's 5 tasks are:
 - ▶ Metric conversion
 - ▶ Telling the time
 - ▶ Introducing Area
 - ▶ Two Way Tables
 - ▶ Fractions to Decimals

Monday

- ▶ Please complete your Learning by Questions Maths Task.
- ▶ The focus for today's task is 'rounding numbers up to 1 million.'
- ▶ Remember, when we round numbers they will always end in a 0 because we are rounding them to a power of 10.
- ▶ Look for the place value digit that you are rounding e.g if you're rounding to the nearest thousand find the thousands column.
- ▶ Then look to the digit to the right of that column- this tells you whether to round up or down (e.g if rounding to the nearest 1000 the digit to the right is the 100s digit). If the digit is 5 or more round up. If it is less than 5 round down.
- ▶ The below video may also help.
- ▶ <https://www.bbc.co.uk/bitesize/topics/zh8dmp3/articles/zpx2qty>

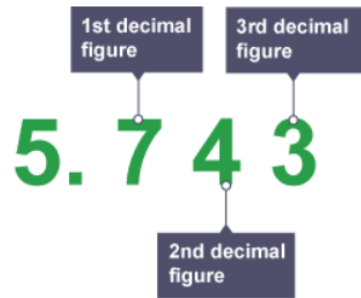
Tuesday

- ▶ Complete your Learning By Questions Task.
- ▶ The focus of today's task is estimating and using the inverse operation to check.
- ▶ Remember estimating means a good guess- you may be able to use your rounding skills to help. E.g estimate $1789 + 199$ we might round 1789 to 1800 and 199 to 200. $1800 + 200 = 2000$
- ▶ The inverse means to opposite operation. The inverse of addition is subtraction and the inverse of multiplication is division and vice versa.
- ▶ We can use the inverse to check calculations.
- ▶ E.g $125 + 25 = 150$, we can do $150 - 25 = 125$ to check.

Wednesday

- ▶ Complete today's Learning by Questions task.
- ▶ Today you will be rounding to a given decimal place.

Decimal places are counted from the decimal point:



So, the number 5.1492 has four decimal places, while 4.34 has two decimal places.



To round a number to a given number of decimal places, look at the number in the next decimal place:

- If it's less than 5, round down
- If it's 5 or more, round up

Thursday

- ▶ Today's Learning By Questions task is all about adding and subtracting mentally.
- ▶ Remember mentally means in your head- not using a written method.
- ▶ Use your number bonds and rounding to help you.
- ▶ E.g $34 + 19$, we might do $34 + 20 = 54$ and then subtract $1 = 53$.
- ▶ You can also spend some time today practicing your times tables on Times Table Rockstars.

Friday

- ▶ Today you will be focusing on adding numbers with up to 2 decimal places.
- ▶ You can use written methods for these tasks such as column addition.
- ▶ Remember- showing your working out and writing things down means you're less likely to make a mistake.

- ▶ Once you have done this, check that you have also completed your My Maths tasks.
- ▶ If so, well done! A super week. Now enjoy your weekend.

