

Plant Art

Learning Objective:

To appreciate the work of different artists

Back

www.planbee.com

Next

Today, take a look at these different pieces of artwork that link to plants. Decide what you like about each one (or what you don't like) and then try to recreate your own version using your favourite one as inspiration 😊



Which piece of art is your favourite, and why? Explain your reasoning.



Blood Swept Lands and Seas of Red



Vegetables in a Bowl (The Gardener)



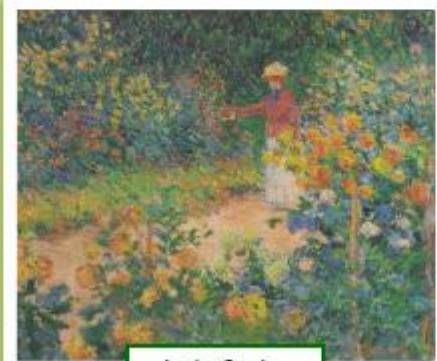
Evening; Red Tree



Exotic Landscape



Bouquet of Flowers on a Ledge



In the Garden



The Tree of Life



Irises

Back

www.planbee.com

Next



Bouquet of Flowers on a Ledge

Artist: Ambrosius Bosschaert (Dutch)

Date artwork created: 1619-1620

Size of artwork: 28cm by 23cm

Media used: oil paint

Bosschaert was one of the first artists to specialise in painting detailed flower artworks. His paintings were symmetrical in shape and highly accurate. He aimed to show the brief beauty of picked plants before they withered and died.

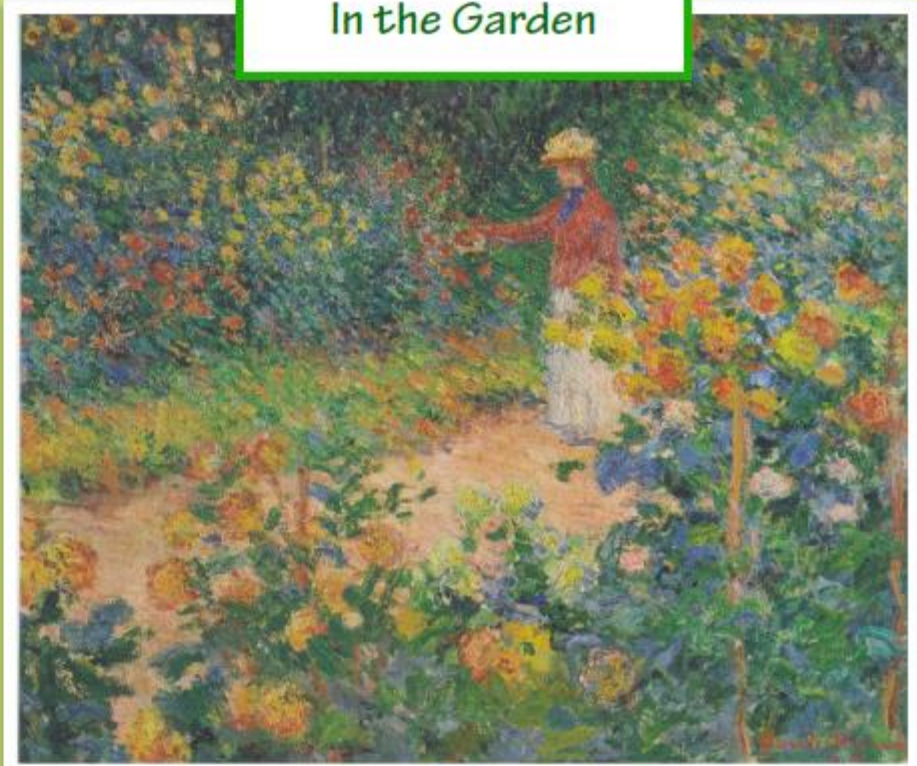


Artist: Claude Monet (French)
Date artwork created: 1895
Size of artwork: 81 cm by 95 cm
Media used: oil paint



Monet painted in the Impressionist style. This is a type of art that tries to capture a feeling or experience rather than being accurate. For this painting, Monet was inspired by his own garden.

In the Garden



How does this painting make you feel?



The Tree of Life

Artist: Gustav Klimt (Austrian)
Date artwork created: 1909
Size of artwork: 195cm by 102cm
Media used: oil paint

Klimt's Tree of Life is said to represent heaven and earth, and the connection between them - the branches are reaching for the sky, and the roots are growing into the earth. The swirling, twisting branches show how the path of life can be complicated.



Artist: Vincent van Gogh (Dutch)

Date artwork created: 1889

Size of artwork: 71 cm by 93cm

Media used: oil paint



Van Gogh created this painting towards the end of his life, in the gardens of the hospital where he had been admitted. He used strong outlines and intense colours. Some people think that the white flower is a symbol of how lonely Van Gogh felt whilst in hospital.

Iris



What do you think the white iris means?



Vegetables in a Bowl
(The Gardener)



Can you see
both images?



Artist: Guiseppe Arcimboldo (Italian)

Date artwork created: 1587-1590

Size of artwork: 36cm by 24cm

Media used: oil paint

This artist is best known for his portrait heads made from overlapped fruits, vegetables, flowers and other items. This piece of art is particularly imaginative - held one way up, it looks like a bowl of vegetables, but held the other way up, we can see a face!



Artist: Piet Mondrian (Dutch)
Date artwork created: 1910
Size of artwork: 70cm by 99cm
Media used: oil paint

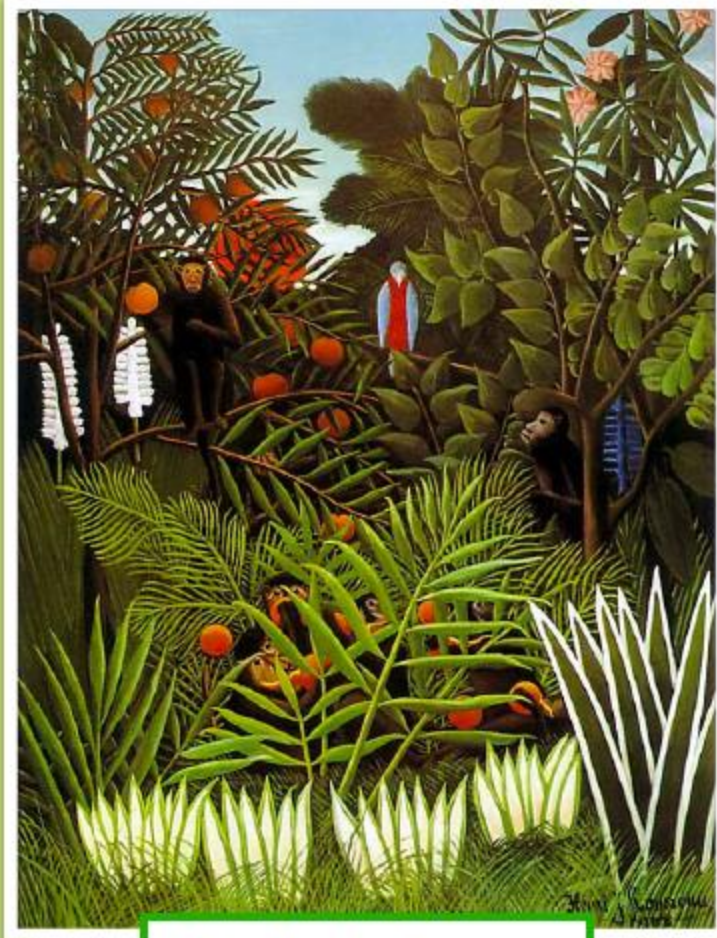


During this phase of his artwork, Mondrian experimented with painting realistically shaped objects, but used colours that were brighter than in real life. In this picture, he contrasted the cool blues of the background with the warm reds of the tree. This represents his vision of nature.

Evening; Red Tree



What would your vision of nature look like?



Exotic Landscape

Artist: Henri Rousseau (French)
Date artwork created: 1908
Size of artwork: 116cm by 89cm
Media used: oil paint

Rousseau was a self-taught artist, who retired from his job to devote all his time to painting. He especially enjoyed painting jungle scenes. In this picture, he uses rich, vibrant shades of green for the leaves, grass and trees. The white used on the leaves in the foreground makes them stand out.



Artist: Paul Cummins (British); Stage Designer: Tom Piper (British)

Date artwork created: 2014

Media used: ceramics



This was an art installation which was displayed in the moat of the Tower of London between July and November of 2014, to commemorate the centenary of the outbreak of WW1. It consists of 888,246 handmade ceramic poppies - one to represent each British serviceman who was killed in the war.

Blood Swept Lands and Seas of Red



How long do you think it took to install all of the poppies?

Sometimes, when we know more about a piece of artwork, we understand it better, and this can change our viewpoint and feelings towards it.



Task

Choose your favourite style of plant art and try to recreate it in any format that you choose: Sketch, Paint, Collage, Natural Materials or anything else that you like!